



Elavon



Setting up Smartlink

A guide for ePOS providers

/ Introducing **Smartlink**



Smartlink automatically shares card payment details between the till and your terminal, for a seamless payment experience:

- **Serve customers faster**
- **Reduce rekeying errors**
- **Improve ePOS performance**



/ Why Smartlink?



Speed

Data is automatically exchanged between your till and terminal, removing the need to re-key the transaction into the terminal. This reduces the risk of manual input error and delivers a faster check out experience which means happy customers.



Simplicity

It's a middleware solution that is easily installed to securely integrate your till and terminal. End of day reconciliation is streamlined and PCI and EMV updates can be actioned automatically.



Sales

A great payments experience is an essential part of your customers' satisfaction and a great way to build loyalty. A more efficient solution means you can serve more customers, quicker, leading to increased sales and revenue.

/ How Smartlink works

A more efficient payment process in four easy steps.

Step 1

Transaction is entered into the till

Step 2

Transaction details are automatically shared with the integrated terminal via the Smartlink interface

Step 3

Customer completes transaction as normal, either as a contactless or Chip & PIN payment




Step 4

Transaction received by Elavon to complete processing

Transaction response returned to till system for completion



Smartlink Pro

Semi-integrated for a seamless payment experience.
All transactions (sales, refunds, void, batch, etc.) are initiated and handled through the till.

POS	Model	Transaction type	Communications	Print receipt
	Desk/5000 (Countertop with optional PIN pad)	All transactional data is directly sent to the POS terminal enabling your staff to seamlessly handle card payments using only the till	IP, PSTN	Till and/or terminal
	Lane/3000 (PIN pad)	All transactions (sale, refund, void, batch) must be initiated and handled via the till. The PIN entry device (PED) will only display cardholder relevant information such as PIN entry, tip amount, accept Dynamic Currency Conversion	Via till or directly through network	Till
	Move/5000	All transactional data is directly sent to the POS terminal enabling your staff to seamlessly handle card payments using only the till	WiFi	Till and/or terminal

/ Smartlink Lite

Lite integration for a simple and efficient solution where sale transactions must be initiated from the till. All other transactions and functions are completed directly on the POS.

POS	Model	Transaction type	Communications	Print receipt
	Desk/5000 (Countertop with optional PIN pad)	Sales transaction data is directly sent to the terminal for your staff to handle card payments.	IP, PSTN	Terminal
	Move/5000	Sales transaction data is directly sent to the terminal for your staff to handle card payments.	WiFi	Terminal

/ Integration methods

Dynamic Link Library (DLL)

- Distributed as part of your Developer Toolkit (see slide 11)
 - Access to a library of predefined services for data management
 - Tailored for .NET Windows environments
 - Equivalent packages available for Linux environments
 - Ideal for both Smartlink Pro and Lite options
-

Tag Length Value (TLV)





- Alternative if DLL unsuitable
 - Suitable for all environments (if TCP-IP Protocol supported)
 - Low level messaging between the electronic cash register and the PIN entry device, built out by the integrator
 - Can be used for both Smartlink Pro and Lite options
-

Distributed Library Support

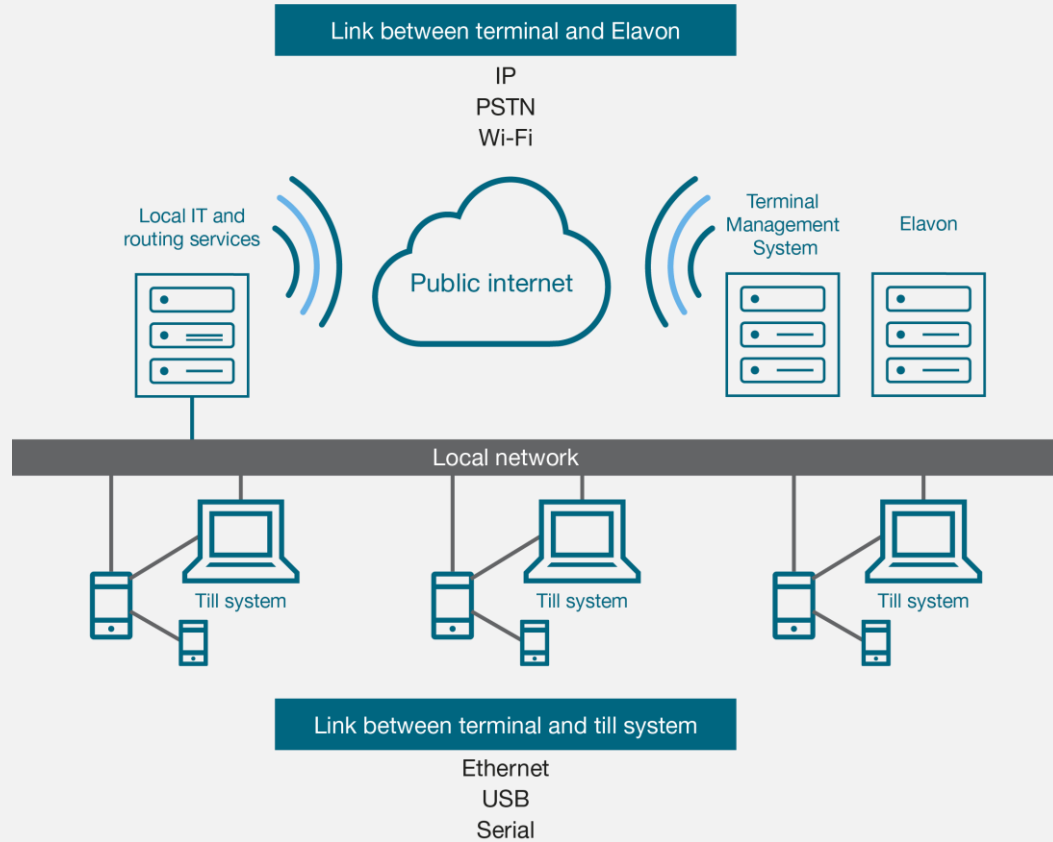
- Windows 7 onwards
- Fedora
- Ubuntu



/ Hardware supported

Device	Communication supported to Smartlink	Communication supported to Elavon Host
Desk/5000 	RS-232 Serial link USB link Ethernet link	IP, PSTN
Lane/3000 	RS-232 Serial link USB link Ethernet link	IP, PSTN
Desk/5000 and Lane/3000 	RS-232 Serial link USB link Ethernet link	IP, PSTN
Move/5000 	Ethernet via WiFi	WiFi

/ Hardware supported



/ Your developer toolkit

Smartlink overview

A detailed overview of Smartlink and the benefits for customers

USB drivers

Software drivers to support Smartlink connectivity via USB cable (connection between till and terminal)

Intake form

To be completed to use Elavon's test equipment in a controlled test environment

Till simulator

A piece of software which simulates a till (specifically created for Smartlink)

Developer documentation

How-to guides for installation and connectivity. See next slide for details



Your developer documentation

Document	Option	Description
Terminal solutions architecture	POS System Overview	Describes the layered software architecture of the full Ingenico terminal solution
Terminal behaviour	Pro and Lite	Describes the PED functional requirements and constraints on the PED behaviour depending on implementation i.e. Smartlink Pro and Lite
DLL manager	Pro and Lite	Explanation of how to install and use the standard libraries
Semi-integrated TLV messaging	Pro	Describes the low level message protocol description based on TLV between an integrator's electronic cash register and the PED
Receipt requirements	Pro and Lite	A detailed description of all mandatory receipt requirements
Simulator install guide	Pro and Lite	A detailed walkthrough of the Smartlink simulator configuration on both the terminal and Linux/Windows variants
Linux packages installation	Pro and Lite	Describes the process for Linux network link, demo and development installation
PPP user guide	Pro	Detail on how to configure the Point-to-Point Protocol (PPP) connection and how to share the internet connection between the PED and the ECR
Events test	Pro	Describes how events test feature manually generates events from the terminal (with associated mock data) over the Smartlink interface

How to implement Smartlink

Step 1

Elavon confirm your customers details and requirements

Step 2

Elavon provide a mutual non-disclosure agreement (NDA) for you to complete and submit

Step 3

Elavon will provide you with the developer toolkit

Step 4

Complete the intake form to capture requirements and send back to Elavon

Step 5

Elavon will send you a preconfigured Smartlink terminal for development and testing

Step 6

Elavon will share a test script to self-certify your till application. Once complete, Elavon will verify the results for project sign off

You can support your customer onsite or remotely during the installation by our vendor. Elavon will support you through the whole process of developing the till application.



/ Questions...

We make it possible. You make it happen.

Elavon

 **0800 028 1662**

 **sales@elavon.com**

 **elavon.co.uk**



Elavon Financial Services DAC. Registered in Ireland with Companies Registration Office. The liability of the member is limited. United Kingdom branch registered in England and Wales under the number BR009373. Elavon Financial Services DAC, trading as Elavon Merchant Services, is authorised by the Central Bank of Ireland and the Prudential Regulation Authority and subject to limited regulation by the Financial Conduct Authority and Prudential Regulation Authority. Details about the extent of our authorisation and regulation by the Prudential Regulation Authority, and regulation by the Financial Conduct Authority are available from us on request.
Y3450v20719